

PROPERTY MANAGER

GLENN KIRKHAM

OFFICE MANAGER

WENDY CANTWELL

MAINTENANCE

DOUG BENSON

DOUG WHITING

JOHN SCOTT

GROUNDS

MARK VANKAMPEN

ADMIN. ASSIST.

LYNDSEY MORRISSEY

BOARD MEMBERS

DORIT CARD

BERYL WATTERS

TOM MORRISSEY

TRISH DAUTERMAN

RAINI MAJESKE

OFFICE HOURS

MONDAY—FRIDAY

8:00 AM—5:00 PM

CONTACT DIRECTORY OFFICE

(517) 882-3461

EMERGENCY MAINTENANCE

(517) 202-7820

AFTER FEB. 5, 2010

CALL 517-897-0194

POLICE NON-EMERGENCY

(517) 483-4600

EMERGENCIES DIAL 911

WEBSITE VILLAGETOWNHOUSES.COM

Village Townhouses

VOLUME 2 ISSUE 8

FEBRUARY 1, 2010

Emergency On-Call Change

Effective **February 5, 2010**, the staff members of Village Townhouses will be responding to any of the after hour Emergency Maintenance calls for Village Townhouses only. The new contact number is **517-897-0194**. Should you call the old emergency number, it will be answered but you will be asked to call the new number, which could cause a delay. Either the member, household occupant or those listed on your lockout policy must be present and must be able to be contacted by phone. Please refer to your membership handbook under Maintenance for examples of what is considered an emergency. In the event the emergency is a gas leak please call Consumer Energy first at 1-800-477-5050 and then **517-897-0194**. Should you have any questions please contact the Office at **517-882-3461**.



Pictures

If anyone took pictures of Attwood City Park when it was flooded in late May 2009 please contact the Office at **517-882-3461**. These pictures may be beneficial in litigation with the city of Lansing.



Community Room

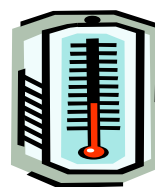
Need a place to host that special event? Stop by our community building and look at what we have to offer! For details please call the office at **517-882-3461**.

Clean up pet feces

As the temperature begins to warm up and the snow thaws please remember to go out and clean up after your pet. Having a pet is a privilege not a right. Please help us keep Village looking its best.

Open Doors or Windows

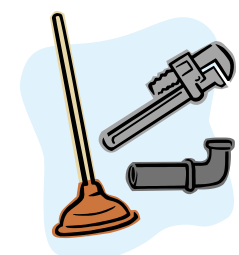
When the temperature is below 40 degrees, doors and windows are to be kept closed. Members will be charged a fee for any observed open doors and/or windows. This fee will help offset the heating costs charged to the Cooperative.



Salt

Salt will be available again this year for your use on sidewalks and can be picked up Monday-Friday 8:00 am- 5:00 pm at the office next to the garage. **Please bring your own**

container for salt and only take what you need.



Cold Weather Plumbing Tips

With the onset of cold weather, we'd like to offer a few tips to help prevent a plumbing disaster: When temperatures plummet, we recommend that you let faucets drip. This helps keep pipes from freezing. Be sure to run both hot and cold to protect both water lines. Also, open cabinet doors under all your sinks. This will allow warmer air to circulate around your pipes.

Drains

Please do not put any type of drain openers in a slow or plugged drain. Instead, call our maintenance staff for assistance. If you do put a chemical in your drains, please let our staff know prior to working on the lines, as this may put them at risk.

Waste Management

This letter is being sent to comply with the Michigan Public Act 42, which requires solid waste haulers to annually notify their customers regarding materials prohibited from landfill disposal. The list of banned materials (a through m) is shown below. Almost all of the banned materials can be readily diverted from landfill disposal and many of the materials can be recycled for reuse as a component of another material or as a reusable item. Some material however, like low-level radioactive waste, requires a specific alternative disposal method. The best source of information to learn how and where to recycle or dispose of the following materials is the Michigan Department of Environmental Quality Web site, found at <http://www.michigan.gov/deg>. Once at the site, click on "Waste" for information and links to desired information.

(a) Medical waste, unless that medical waste has been decontaminated or is not required to be decontaminated but is packaged in the manner required under part 138 of the public health code, 1978 PA 368, MCL 333.13801 to 333.13831.

(b) Beverage containers.

(Applies to all containers that require a 10 cent deposit)

(c) Whole motor vehicle tires.

(d) Yard clippings. Leaves, grass clippings, garden debris, and shrubbery, brush and tree trimmings less than 4 feet in length and 2 inches in diameter, unless they are diseased or infested.

(e) Used oil as defined in section 16701.

(f) Lead acid batteries (primarily truck and car batteries) as defined in section 17101.

(g) Low-level radioactive waste as defined in section 2 of the low-level radioactive waste authority act, 1987 PA 204, MCL

333.26202.

(h) Regulated hazardous waste as defined in R 299.4104 of the Michigan administrative code.

(i) Liquid waste as prohibited by R 299.4432(2)(c) of the Michigan administrative code.

(j) Sewage.

(k) PCBs as defined in 40 CFR section 761.3.

(l) Asbestos waste, unless the landfill complies with 40 CFR section 61.154.

(m) Empty drums — Drums must be either full of solid waste or be crushed in order to be disposed of in a solid waste landfill.

The information shown above has been provided to you as required by Michigan state law. We trust you find the information useful and urge you to take appropriate steps to insure banned items are removed from any waste you generate for disposal at a solid waste landfill. Thank you for the opportunity to serve your solid waste disposal needs.



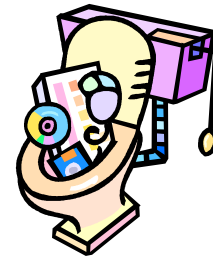
Recycling

Each townhouse is furnished with a gray or green recycling bin. Each member must mark this bin with their address. The items that can go into the recycling bins are: newspaper, aluminum and tin cans, all colors of glass, magazines, plastic milk jugs and containers. **The pick up day is every Tuesday, unless the Tuesday is a federal holiday.** Members are to place their bin at the curbside before 8:00 am on Tuesday and a truck will empty the bin. **Bins cannot be placed outside before 6:00 am on recycling pick up day.**



Maintenance Tips

Just a reminder that only toilet tissue is to be flushed down the toilet. The toilet and plumbing is not designed for any other articles to be flushed in the sewer lines. Your cooperation is appreciated in this manner.



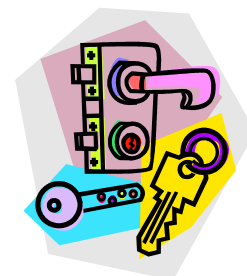
Please Slow Down!

For the safety of your neighbors, please observe the speed limits when driving through our community. Be especially cautious when turning corners, as visibility may be limited. Remember to watch for pedestrians...they may not be watching for you! Parents, please make sure your children are **Not** playing in and around the cars in the parking lots. It makes it very hazardous when cars are pulling in the parking lots and have to stop quickly for a child who is not paying attention. We appreciate everyone's cooperation.

Get Personal About Crime Prevention

Here are actions you can take to help protect your personal property:

- Check that locks are working on windows.
- Always lock your door when leaving your townhouse for any reason. Make sure your door is locked while inside your townhouse also.
- Use your front and back porch light at night.
- Don't leave anything in your car that others can take. Lock your car when it is parked.
- If you have a car alarm or other theft deterrent device, use it.



February 2010

Sun	Mon	Tue	Wed	Thu	Fri	Sat
	1 Carrying Charges Due Trash Pick up	2 Recycling Pick up Groundhog Day	3	4	5 Trash Pick up New Emergency Maintenance # 517-897-0194	6
7	8 Trash Pick up	9 Recycling Pick up Rose Pest Control	10	11 8:00 am Late Fees Assessed	12 Trash Pick up	13
14 Valentine's Day 	15 Trash Pick up Presidents Day	16 Recycling Pick up	17	18	19 Trash Pick up	20
21	22 Trash Pick up 6:30 pm BOD Meeting	23 Recycling Pick up Rose Pest Control	24	25	26 Trash Pick up	27
28						